

# Floor Mat development kit



## About the Seat Mat

---

The Floor Mat dev kit is a OEM development hardware system for product developers. The Floor Mat sensor is designed to be placed on a smooth ground.

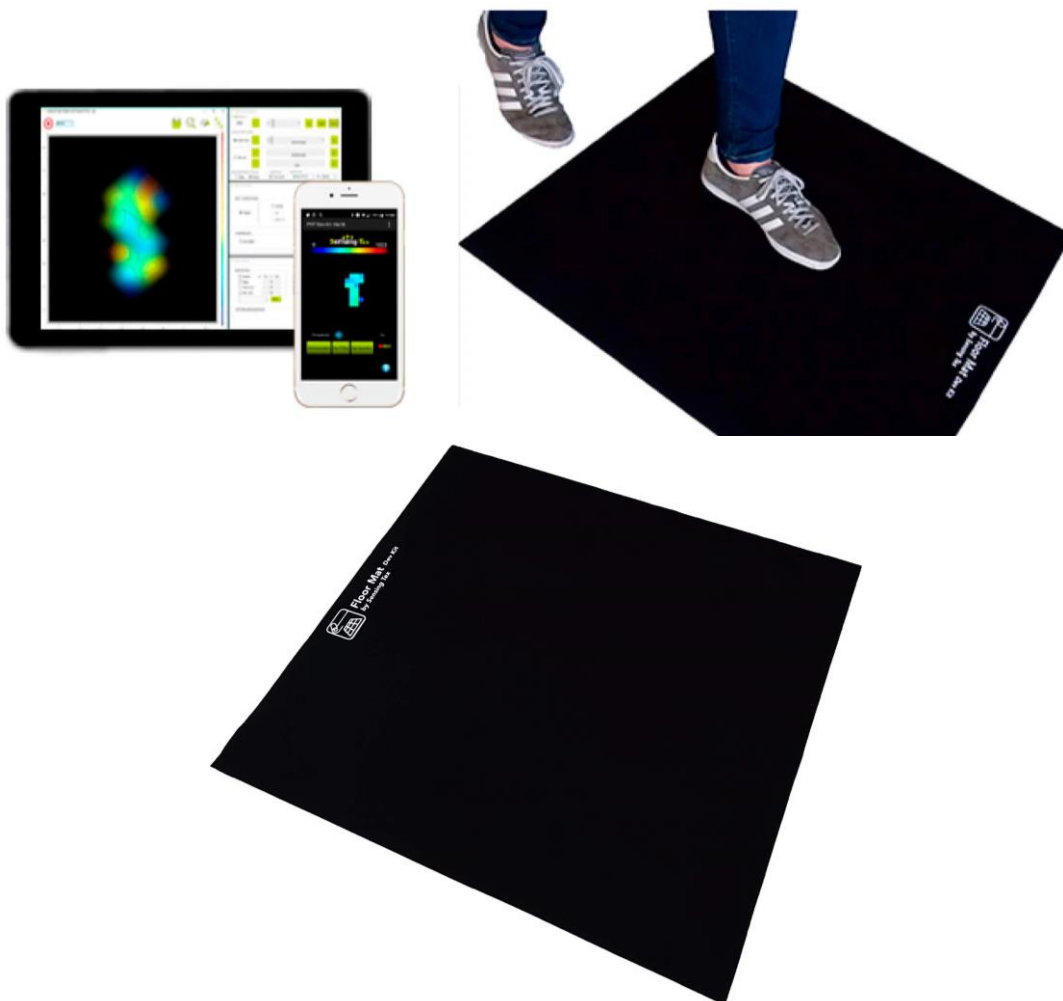
The Floor Mat is performed by a textile matrix sensor that gathers the pressure maps of users when standing. This data is then treated by our software analytics to obtain useful information such as pressure hotspots, the posture center of balance and pressure distribution

This relevant information is then displayed in the Software provided; the user can use the insight to take the most appropriate decisions to design his own products, the system may be integrated with any other software.

Please ask more info to [info@sensingtex.com](mailto:info@sensingtex.com) if you are interested in.

## Screen Shot Software Analytics

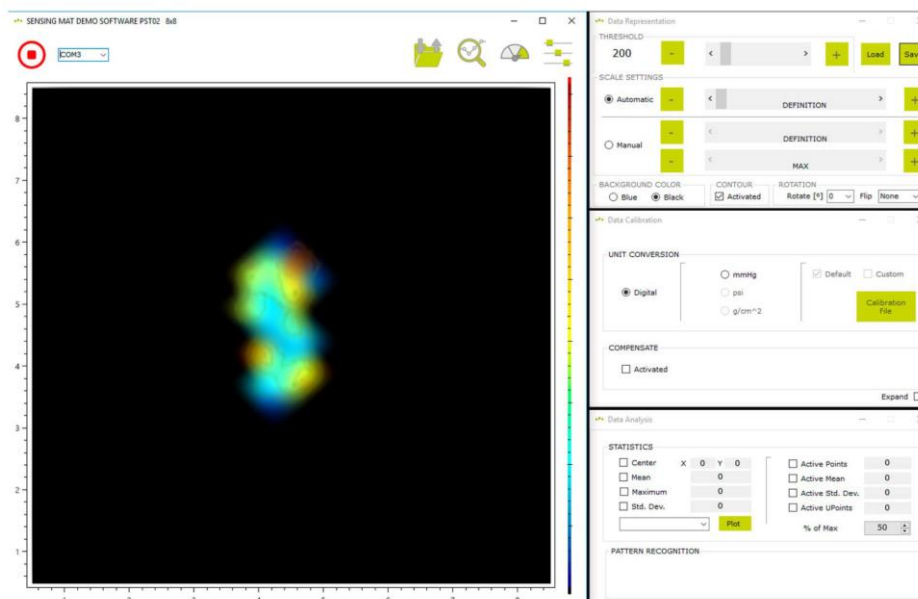
---



## System Components



## Software Module Machine Learning



# Main features

## 1. Software Features

Floor Mat provides a complete software analytics to read out raw data, analyze statistical magnitudes and export data to figure out new services be a part of a team who improve daily life of the users



**Movement Analysis**



**Postural Analysis**



**Co-creation  
New Services**

## 2. Sensing Mat Features

### A. Size and Topology Features

<b>Overall Area Sensing Pad [mm] [L x W]</b>	710 x 742
<b>Sensing Area [mm] [L x W]</b>	585 x 585
<b>Number of Sensels</b>	256
<b>Topology [R x C]</b>	16 x 16
<b>Horizontal &amp; Vertical Resolution [mm]</b>	37.5
<b>Sensor Shape and Size [mm]</b>	Round 22.5



710 x 742 mm Overall Size



585 x 585 mm Sensing Area



256 Sensels

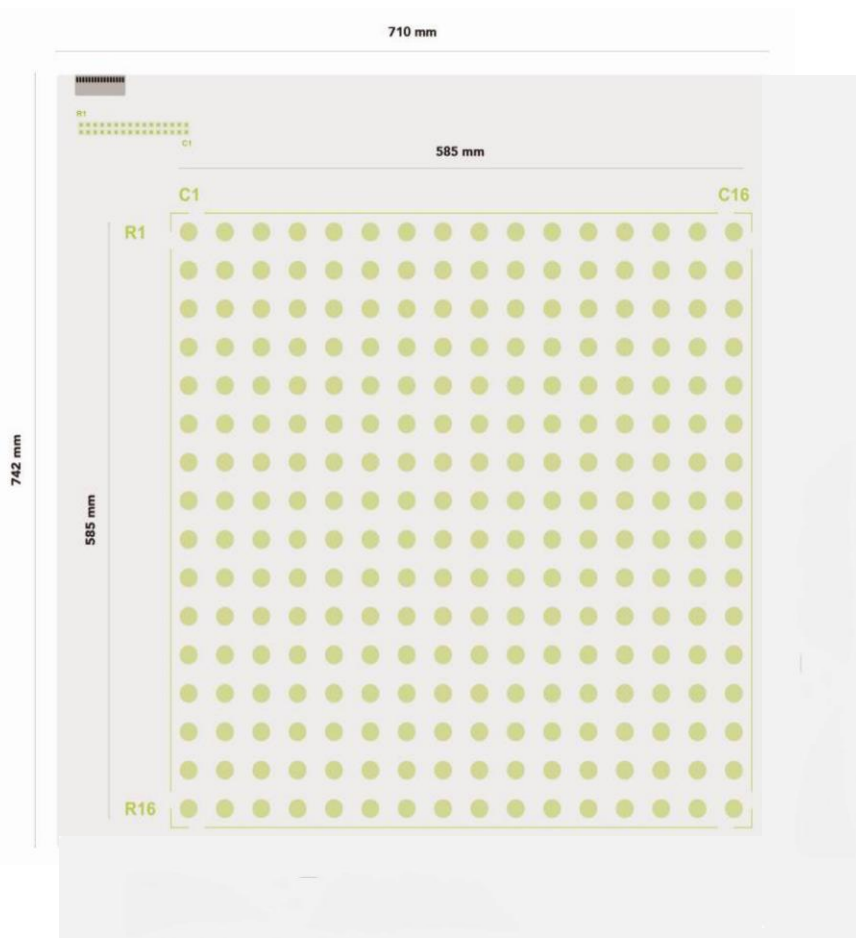


Lamination Rubber and Neo-Prene Cover

## B. Size and Topology Features

<b>Linearity</b>	Yes Conductance vs Pressure
<b>Hysteresis</b>	12%
<b>Repeatability</b>	<8%
<b>Accuracy</b>	10%
<b>Drift</b>	<12% Model for Correction
<b>Pressure Range</b>	5-250 mmHg

## C. Diagram



## 2. Electronic hardware features

<b>A/C circuit</b>	With module multiplexing for Cross-talk reduction and fast processing
<b>Windows compatible</b>	Yes
<b>Resolution</b>	12 bits
<b>Scanning frequency [Hz]</b>	Up to 22 (BT)
<b>Connectivity</b>	Bluetooth Classic Class II + USB
<b>Battery</b>	Yes



USB 2.0



USB Charger



Bluetooth Classic Class II



Up to 22 Hz Scanning Frequency